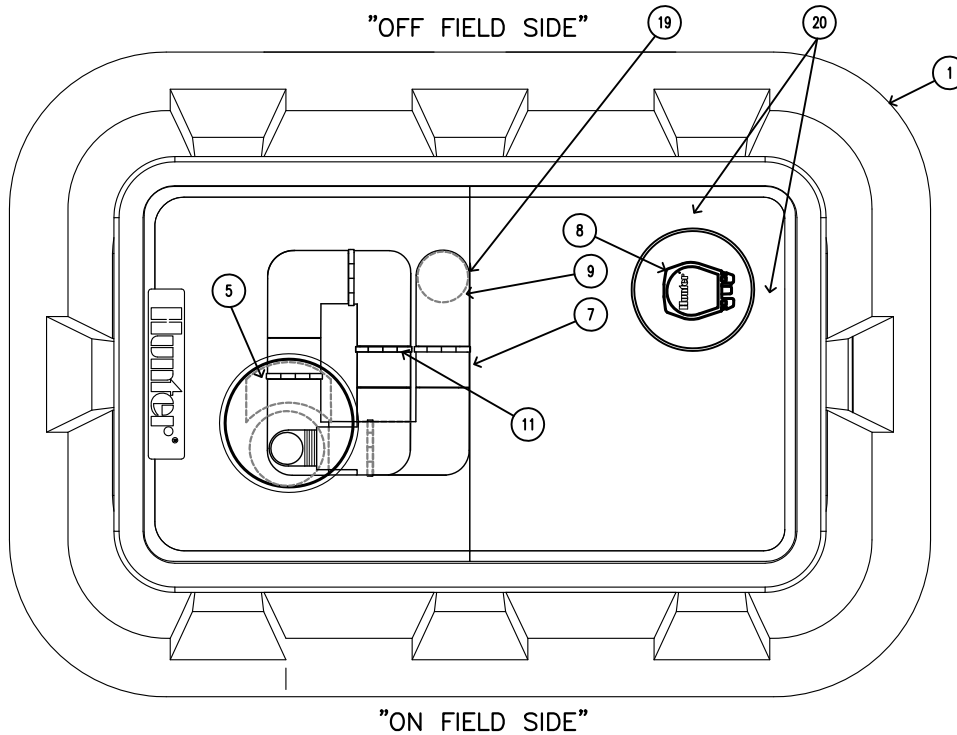


# STK-1

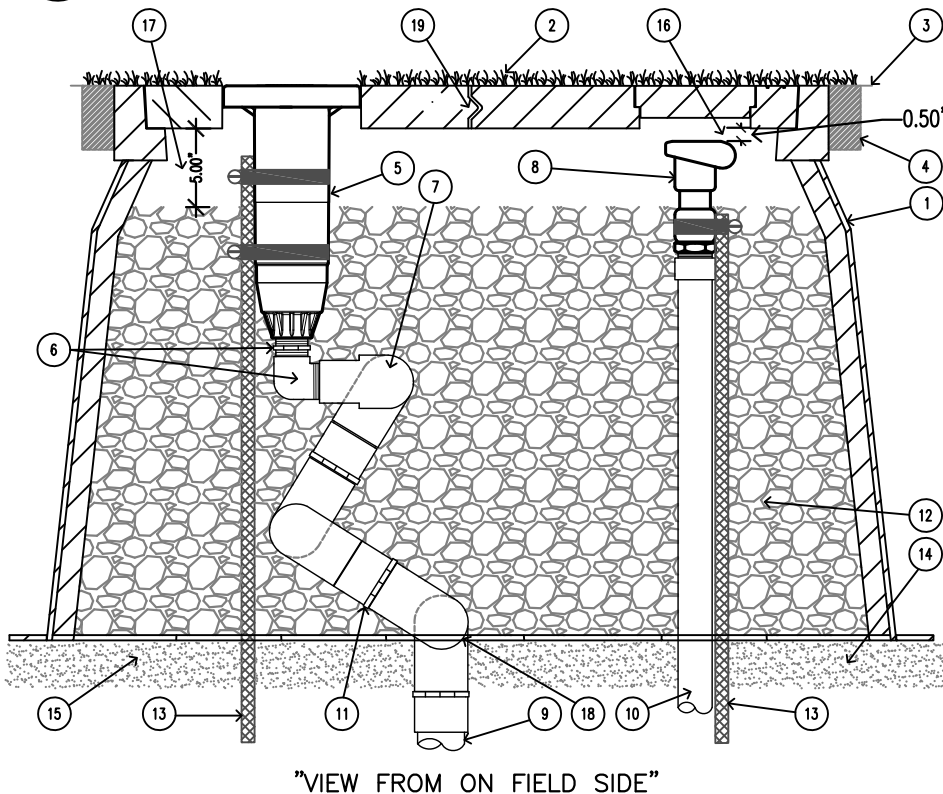
## SYNTHETIC TURF BLOCK ROTOR & ENCLOSURE SYSTEM



- ① HUNTER ST173026B\* COMPOSITE BOX & 2-PIECE POLYMER-CONCRETE LID ASSEMBLY WITH CAST-IN OPENING TO SUPPORT ROTOR LATERAL THRUST PLUS CAST IN OPENING WITH CIRCULAR COVER FOR QUICK COUPLER ACCESS
  - ② OPTIONAL - SYNTHETIC TURF OR RUNNING TRACK MATERIAL ATTACHED TO COVERS
  - ③ FINISHED GRADE SET TO FIELD PERIMETER TACK/GLUE BOARD OR AS PER SPECIFICATION
  - ④ 2" X 4" TACK/GLUE BOARD AS PER SPECIFICATION ALL SIDES
  - ⑤ HUNTER STG-900 WITH RUBBER COVER KIT 473900 INSTALLED
  - ⑥ HUNTER 239800 & 239300 ROTOR ADAPTER FITTING WITH 3 ACME PIVOT POINTS
  - ⑦ HUNTER ST2008VA PREFABRICATED 2" SCH 80 PVC SWING JOINT WITH 6 ACME PIVOT POINTS TO PROVIDE MULTI-AXIS ARTICULATION AND ALIGNMENT OF ROTOR TO THE OPENING IN ENCLOSURE COVER
  - ⑧ HUNTER HQ5RC QUICK COUPLING VALVE
  - ⑨ LATERAL PIPING AND FITTINGS - 2" MINIMUM AS PER SPECIFICATION FROM CONTROL VALVE THROUGH TO ST2008VA SWING JOINT
  - ⑩ SCH 80 PVC RISER SUPPLY PIPING AND FITTINGS - 1" MINIMUM
  - ⑪ ACME THREADED PIVOTING POINTS (9 TOTAL)
  - ⑫ 3/4" MINUS WASHED GRAVEL
  - ⑬ 5/8" X 30" REBAR STAKE AND STAINLESS STEEL STRAPING
  - ⑭ COMPACTED FIELD BASE MATERIAL AS PER SPECIFICATION
  - ⑮ PROVIDE DRAINAGE VIA ACCESS TO FIELD DRAINAGE SYSTEM
  - ⑯ TOP OF QUICK COUPLER SET 1/2" BELOW UNDERSIDE OF ENCLOSURE COVER
  - ⑰ GRAVEL LEVEL 5" BELOW UNDERSIDE OF ENCLOSURE COVER (TO BOTTOM OF ROTOR'S COMPARTMENT)
  - ⑱ ELEVATION OF SWING JOINT'S INLET - SET SECOND PIVOT POINT ON SWING JOINT WITH BOTTOM OF ENCLOSURE PER SIDE VIEW DETAIL DRAWING (26" BELOW ENCLOSURE TOP)
  - ⑲ LOCATION OF SWING JOINT'S INLET - SET INLET AT EDGE BETWEEN ENCLOSURE COVERS & LOCATE 5" FROM THE TOP OF COVER PER TOP VIEW DETAIL DRAWING. INLET MUST NOT BE SET CLOSER TO ROTOR THAN SHOWN.
  - ⑳ LOCATION OF QUICK COUPLER INLET PIPING - MEASURE INLET PIPING LOCATION AT TOP RIGHT HAND CORNER OF ENCLOSURE - 5" FROM TOP EDGE AND 5" FROM SIDE EDGE.
- \*ENCLOSURE DIMENSIONS  
 2 - PIECE COVER - 17" X 30"  
 EXPOSED RIM - 20" X 33"  
 OVERALL HEIGHT - 26"  
 BASE PAD - 27" X 41"

### XX STK-1 TOP VIEW

SCALE: 1.5" = 1'-0" Hunter IRRIGATION DETAIL



### XX STK-1 SIDE VIEW

SCALE: 1.5" = 1'-0" Hunter IRRIGATION DETAIL