

What's New 2026

Hunter®



Innovative Solutions That Make Every Drop Count

At Hunter Industries, innovation drives everything we do. Whether you're watering tall trees, championship turf, or tight corners, our solutions are designed to deliver precise coverage, sustainable water use, and outstanding results in every environment.



HIGH-SPEED I-40 ROTOR WITH OPPOSING NOZZLES

ENGINEERED FOR ELITE SPORTS TURF

Built for the sporting world's biggest stages, the I-40 Rotor delivers precision irrigation with dual opposing nozzles and high-speed rotation.

Key Benefits

- Light water application delivers optimal moisture management in shallow soils
- Quick, precise field syringing cools turf for maximum playability during events
- 6" pop-up height ensures reliable, unobstructed coverage



PRO HIGH-EFFICIENCY NOZZLES

RELIABLE, WATER-SAVING SPRAY PERFORMANCE

Affordable Pro High-Efficiency Nozzles offer targeted coverage, lower flows, matched precipitation, easy installation, and full shutoff capability.

Key Benefits

- High-efficiency spray with highly uniform coverage
- 1.6 in/hr matched precipitation from 8' to 17', 0° to 360° adjustable arc
- Color-coded with natural hues for easy field identification



MSBN-V MULTI-STREAM BUBBLER NOZZLES

TARGET TREE ROOT ZONES WITH CONFIDENCE

Pressure-compensating MSBN-V Multi-Stream Bubbler Nozzles deliver precise 50° dual streams for fine-tuned coverage of different tree types and site layouts.

Key Benefits

- Radius ranges from 1.5' to 2.5' (up to 3' on a 6" pop-up)
- Low 0.25 and 0.50 GPM options offer easy scheduling
- Thread onto Hunter Pro-Spray® Sprinkler Bodies for fast installs



Expand the Limits of Irrigation Control

Take the complexity out of large-scale irrigation management with solutions built to go the distance. Offering advanced features, water-smart precision, and powerful performance, they deliver comprehensive control that saves you time in the field.



MCC CONTROLLER AND EZ-LR DECODER

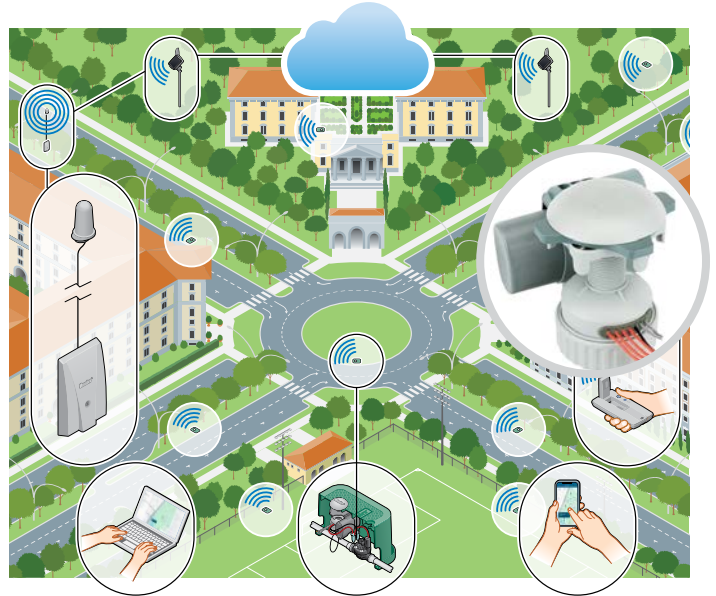
TAKE CONTROL TO NEW DISTANCES

Scalable and efficient, the MCC Controller offers wireless, wide-area coverage and long-range EZ-LR Decoder support, bringing two-wire control to large sites with extended distance requirements.

Key Benefits

- Commands 8 to 108 stations; operates up to 8 simultaneous solenoids
- Supports conventional, EZDS two-wire, and wireless outputs — extend two-wire coverage to 1 mi with the EZ-LR Decoder
- Enables convenient remote irrigation management via Centralus™ Software

**Coming
Soon!**



SKYCOMMAND™ WIRELESS CONTROL SYSTEM

SCALABLE CONTROL FOR COMPLEX SITES

Operate large-scale irrigation from a single point of control — with cellular, Wi-Fi, or LAN connectivity and robust wireless field communication.

Key Benefits

- Manage unlimited locations, each with up to 400 zones
- License-free Repeaters extend the wireless range up to 5 mi
- LoRa® wireless connectivity and site-level scheduling give you reliable, centralized control of battery-operated controllers

**Coming
Soon!**

Pro-Level Tools for Peak Irrigation Performance

Speed up service calls and keep systems running smoothly with proven tools for today's landscapes.



ROAM LR REMOTE

THE ULTIMATE TOOL FOR PROS ON THE GO

Rugged, reliable, and ready to travel, this long-range remote simplifies manual on-site controller operation, streamlining service and saving time on large sites.

Key Benefits

- Covers up to 2 mi line of sight with license-free LoRa® Technology
- Compatible with X2™, Pro-C®, HPC, ICC2, HCC, MCC, and ACC2 Controllers
- Set manual run times from 1 to 90 minutes

**Coming
Soon!**



U-WAVE™ ULTRASONIC FLOW SENSOR

SAVE WATER WITH ULTRASONIC PRECISION

The U-Wave Ultrasonic Flow Sensor delivers real-time, maintenance-friendly flow monitoring — from drip to rotor zones. Solid-state ultrasonic technology ensures accuracy, durability, and optimal performance for a wide range of systems.

Key Benefits

- 1" sensor is compatible with these Hunter and Hydrowise-enabled controllers: Pro-HC, HPC, HCC, ICC2, MCC, and ACC2
- Extremely precise flow detection across high- and low-flow zones (0.2 to 35 GPM)
- Sensor stays in place during winterization and maintenance — no moving parts to remove

**Coming
Soon!**

Website hunterirrigation.com | **Customer Support** +1-800-383-4747

Helping our customers succeed is what drives us. While our passion for innovation and engineering is built into everything we do, it is our commitment to exceptional support that we hope will keep you in the Hunter family of customers for years to come.