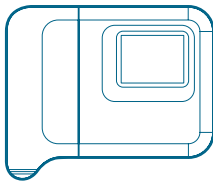


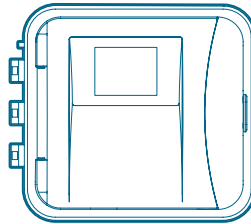
Hydrawise-Ready Controllers

INSTALLATION GUIDE FOR THE FOLLOWING HUNTER CONTROLLERS:

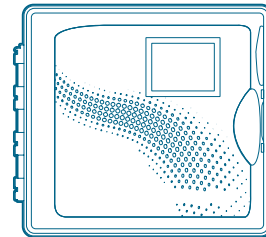
HC



HPC



Pro-HC



The Most Complete
Wi-Fi Irrigation Control System

Hunter®



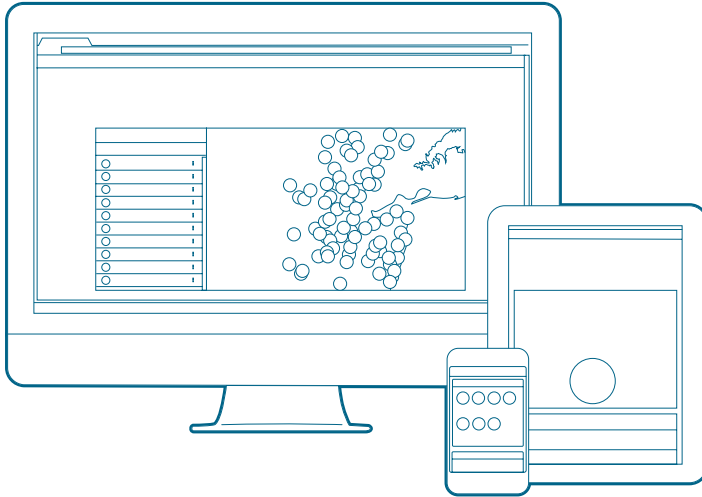
Table of Contents

- 3 Thank You for Purchasing a Hydrawise-Ready Controller
- 4 Mount Your Controller
 - 4 HC Controller
 - 5 HPC or Pro-HC Controllers
- 6 Connect Power to Your Controller
 - 6 HC Controller
 - 6 Indoor Pro-HC Controller
 - 7 Outdoor HPC and Pro-HC Controllers
- 8 Retrofit Your Pro-C Controller
 - 8 With the HPC-FP Kit
- 9 Controller Touchscreen
 - 9 Home Screen Navigation
 - 10 Using the Connection Wizard
- 11 Notices
 - 11 U.S. FCC Statement
 - 11 Innovation, Science and Economic Development Canada (ISED) Compliance Notice
 - 11 Déclaration d'Industrie Canada
 - 11 Certificate of Conformity to European Directives



Download the Hydrawise App from the Apple® App Store or Google Play™ Store, or log in on the [Hydrawise.com](https://www.hydrawise.com) website.





Your Hydrowise-ready controller can connect to the internet via your Wi-Fi router. Once connected, you can access and manage your irrigation system with your smartphone, tablet, or computer. Visit hydrowise.com to get started.

Need more helpful information on your product? Scan below to find tips on installation, controller programming, and more.



Important: A medium-to-high signal strength is preferred to maintain a stable connection between the controller and the router. In some cases, a Wi-Fi extender should be installed to increase the signal. Obstructions such as interior walls and landscaping can block the signal.

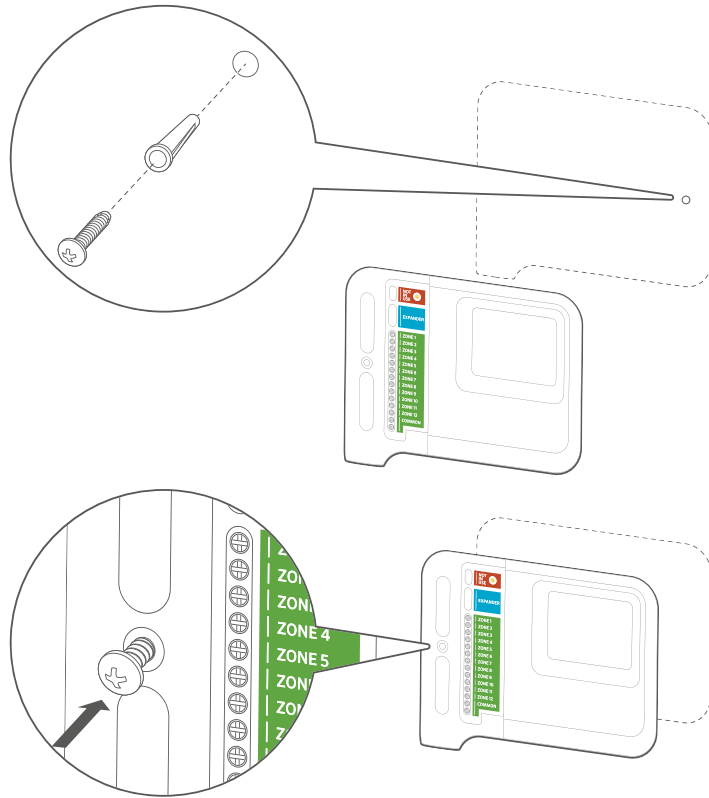


hunter.help/hydrowise



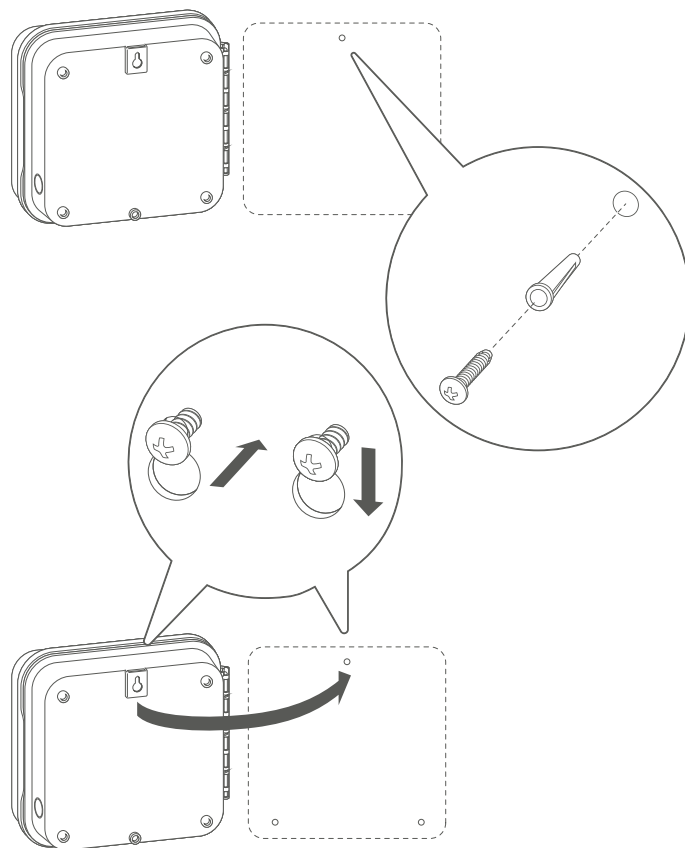
Visit hunter.help/wifispecs to ensure your Wi-Fi network meets the requirements of your Hunter Hydrowise-ready controller.

Mount Your Controller



HC Controller

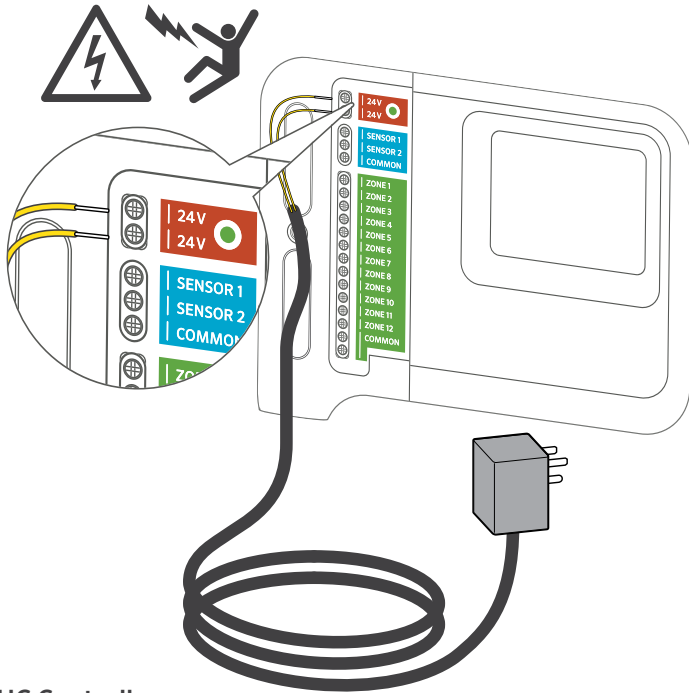
1. Choose a suitable location with strong Wi-Fi coverage.
2. Using a $\frac{3}{16}$ " (5 mm) drill bit, drill a hole and insert a plastic anchor.
3. Insert a screw into the anchor, leaving $\frac{1}{8}$ " (3 mm) exposed.
4. Slide the controller case over the screwhead.
5. Mark a second mounting point, drill and fit the anchor, and fix the controller in place.



HPC or Pro-HC Controllers

1. Choose a suitable location with strong Wi-Fi coverage.
2. Using a $\frac{3}{16}$ " (5 mm) drill bit, drill a hole and insert a plastic anchor.
3. Insert a screw into the anchor, leaving $\frac{1}{8}$ " (3 mm) exposed.
4. Slide the controller case over the screw head.
5. Mark a second mounting point, drill and fit the anchor, and fix the controller in place.

Connect Power to Your Controller



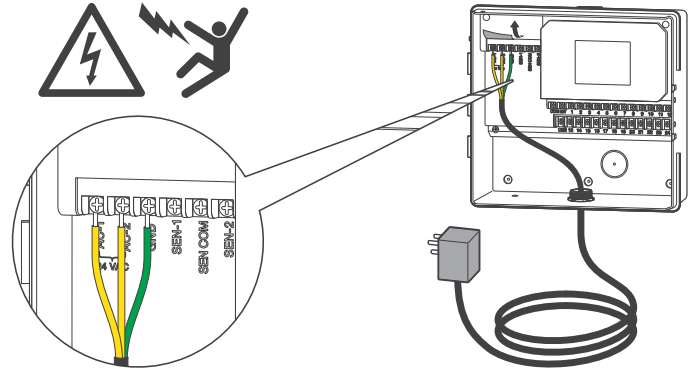
HC Controller

1. Do not plug the transformer into the power source until controller is mounted and all wiring has been connected.
2. Remove the blue cover to the junction box.
3. Route the transformer cable through the hole on the bottom of the controller, connect one yellow wire to each of the terminals marked 24 VAC, and replace the junction box cover.



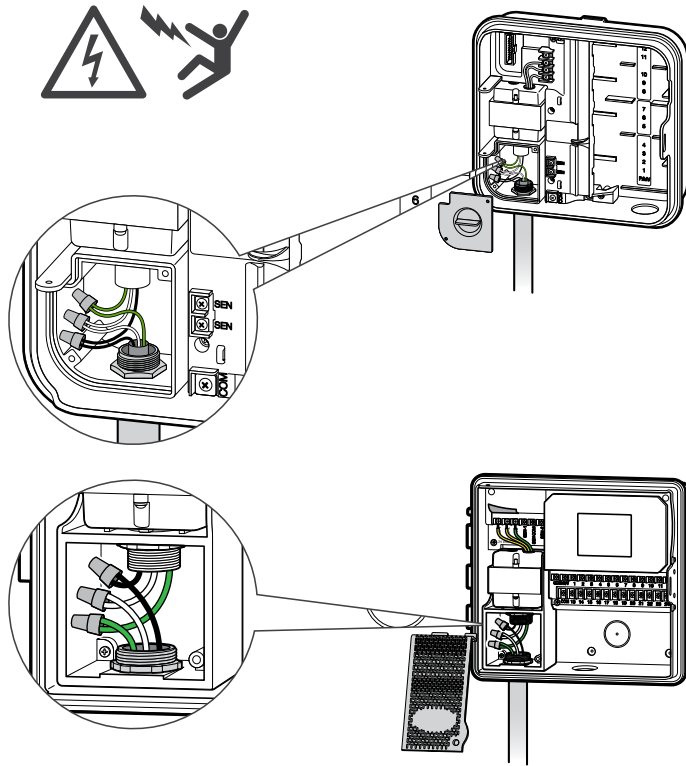
Important:

The HC Controller is designed for indoor use only. Do not cut the cord.



Indoor Pro-HC Controller

1. Do not plug the transformer into the power source until controller is mounted and all wiring has been connected.
2. Open the facepack to expose the controller cabinet.
3. Route the transformer cable through the hole on the bottom left of the controller, connect one yellow wire to each of the screws marked 24 VAC, and wire the green wire to the screw marked GND.
4. The HC Controller is designed for indoor use only. Do not cut the cord.



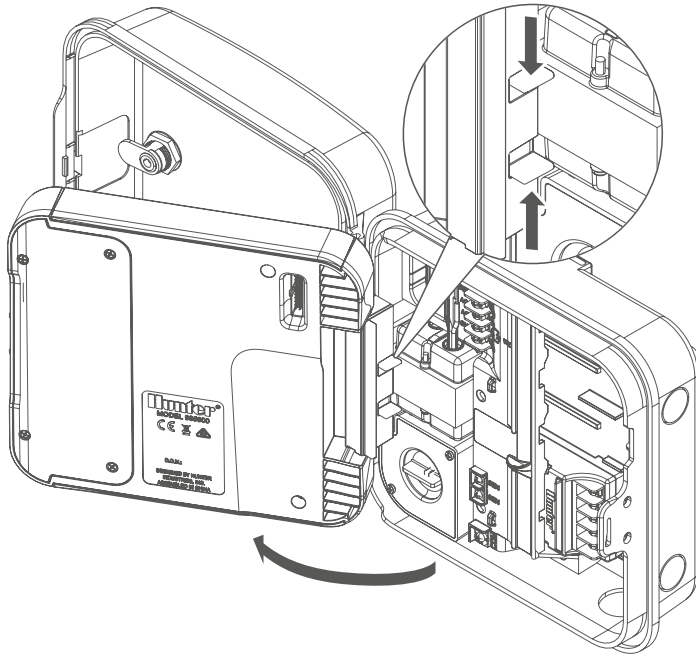
Outdoor HPC and Pro-HC Controllers



Important:

Outdoor HPC and Pro-HC Controllers must be installed by an authorized service technician.

1. Do not plug the transformer into the power source until controller is mounted and all wiring has been connected.
2. Remove the junction box cover, route the cable through the hole on the bottom left of the controller, and attach the cable using the adapter and nut inside the enclosure.
3. Connect the cable wires to the transformer wires in the junction box and replace the junction box cover.

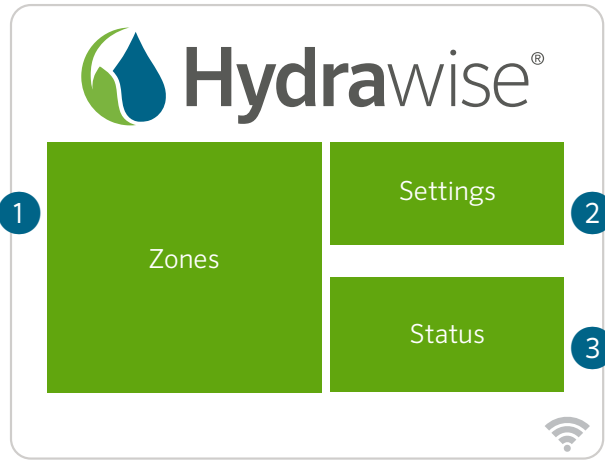


With the HPC-FP Kit

**Important:**

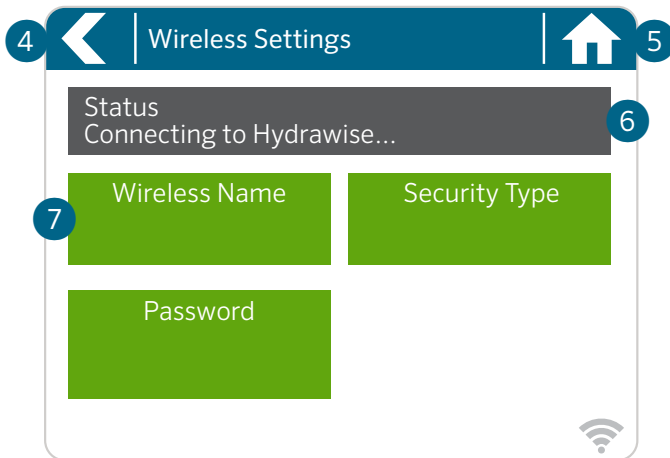
Ensure you have a strong Wi-Fi signal. A signal strength of two or three bars is recommended. Wi-Fi connectivity can also be tested on the HPC Controller (signal strength is shown when you select a wireless network).

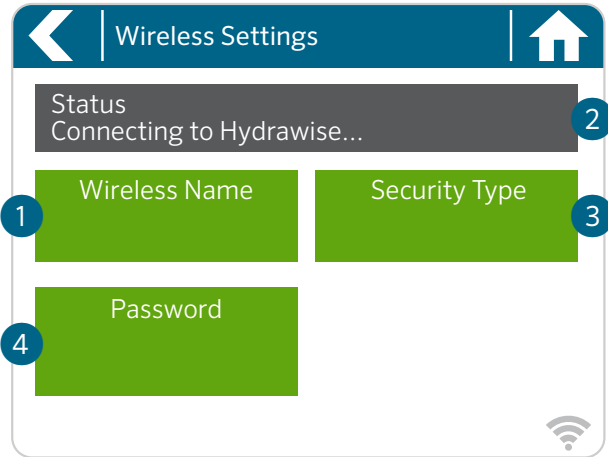
1. Do not plug the transformer into the power source until the controller is mounted and all wiring has been connected.
2. Open the controller facepack to access the cabinet, detach the ribbon cable, release the hinge on the back of the Pro-C facepack, and remove the facepack.
3. Press the hinges on the side of the HPC-FP facepack, insert the pins into the controller cabinet, reconnect the ribbon cable to the new facepack, and reconnect the power to the controller.





Home Screen Navigation

- ① Touch to view all zones.
- ② Touch to change controller settings.
- ③ Touch to view controller status information.
- ④ Go to previous screen (changes not saved).
- ⑤ Go to Home screen (changes not saved).
- ⑥ GRAY items indicate status information.
- ⑦ GREEN items indicate settings which can be changed.





- ① Touch to change the wireless access point.
- ② View wireless connection status.
- ③ Touch to change the wireless security type.
- ④ Touch to change the wireless password.

When connecting to your wireless network, the **Wi-Fi**  icon at the bottom right of the controller screen will flash. Connecting takes about 30 seconds. When successfully connected, the **Wi-Fi**  icon will remain solid.



Using the Connection Wizard

From the Home screen, touch the **Settings** button and then the **Wireless** button.

Select your wireless network from the list shown on the controller display and press the **Confirm** button on the screen. Enter your wireless password and press the **OK** button on the keyboard.



Important:

If your network is not listed, check that the unit is within wireless range. Make sure you press the **OK** button after you've entered your password. Pressing the **Home**  or **Back**  buttons will not save your changes.

U.S. FCC Statement

This equipment has been tested and found to comply with the limits for a Class B digital device, pursuant to Part 15 of the FCC Rules. These limits are designed to provide reasonable protection against harmful interference in a residential installation. This equipment generates, uses and can radiate radio frequency energy, and if not installed and used in accordance with the instructions, may cause harmful interference to radio communications. However, there is no guarantee that interference will not occur in a particular installation. If this equipment does cause harmful interference to radio or television reception, which can be determined by turning the equipment off and on, the user is encouraged to try to correct the interference by one or more of the following measures:

- Reorient or relocate the receiving antenna.
- Increase the separation between the equipment and receiver.
- Connect the equipment into an outlet on a circuit different from where the receiver is connected.
- Consult the dealer or an experienced radio/TV technician for help.

To satisfy FCC RF Exposure requirements for mobile and base station transmission devices, a separation distance of 8" (20 cm) or more should be maintained between the antenna of this device and persons during operation. To ensure compliance, operation at closer than this distance is not recommended. The antenna(s) used for this transmitter must not be co-located or operating in conjunction with any other antenna or transmitter.

Innovation, Science and Economic Development Canada (ISED) Compliance Notice

This device contains licence-exempt transmitter(s)/receiver(s) that comply with Innovation, Science and Economic Development Canada's licence-exempt RSS(s). Operation is subject to the following two conditions:

1. This device may not cause interference.
2. This device must accept any interference, including interference that may cause undesired operation of the device.

Déclaration d'Industrie Canada

Le présent appareil est conforme aux CNR d'Innovation, Sciences et Développement économique Canada applicables aux appareils radio exempts de licence. L'exploitation est autorisée aux deux conditions suivantes:

1. L'appareil ne doit pas produire de brouillage.
2. L'utilisateur de l'appareil doit accepter tout brouillage radioélectrique subi, même si le brouillage est susceptible d'en compromettre le fonctionnement.



Certificate of Conformity to European Directives

Hereby, Hunter Industries declares that the radio equipment type models HC-601i-E, HC-1201i-E, HPC-401-E, PHC-601-E, PHC-601i-E, PHC-1201-E, PHC-1201i-E, PHC-2401-E, PHC-2401i-E are in compliance with Directive 2014/53/EU. The full text of the EU declaration of conformity is available at the following Internet address: subsitere.hunterindustries.com/compliance/

- Frequency Band of Operation (MHz): 2,412 to 2,472
- Maximum Transmit Power (dBm): 18.5

Helping our customers succeed is what drives us. While our passion for innovation and engineering is built into everything we do, it is our commitment to exceptional support that we hope will keep you in the Hunter family of customers for years to come.

A handwritten signature in black ink, appearing to read 'G. R. Hunter', with a long horizontal flourish extending to the right.

Gregory R. Hunter, CEO of Hunter Industries

A handwritten signature in black ink, appearing to read 'Denise S. Mullikin', with a stylized, flowing script.

Denise Mullikin, President, Landscape Division

HUNTER INDUSTRIES | *Built on Innovation®*
1940 Diamond Street, San Marcos, CA 92078 USA
hunterirrigation.com

© 2025 Hunter Industries Inc. Hunter, the Hunter logo, and other marks are trademarks of Hunter Industries Inc., registered in the U.S. and certain other countries. ♻️ Please recycle.