

# ICC2 CONTROLLER

The Professional's Choice for Flexible, Reliable Irrigation Control

**Hunter®**



# POWER + SIMPLICITY, *all in one*

Delivering reliable and efficient irrigation for light-to-midsize commercial settings, the field-proven ICC2 Controller features an abundance of user-friendly features that provide long-lasting performance with maximum water savings. This value-packed controller offers simplicity, versatility, and power in a robust and flexible design.

## **Station-Level Flow Monitoring**

Dedicated flow sensor input for standalone flow monitoring of high and low flows by zone.

## **Solar Sync® Sensor Ready**

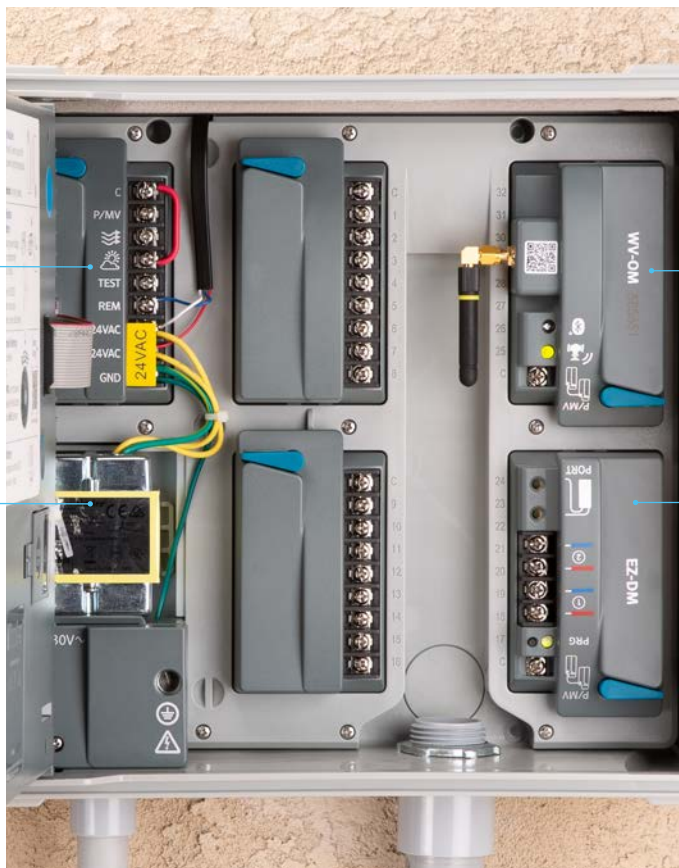
Maximise water savings! Add a Solar Sync Sensor to enable automatic irrigation updates based on locally measured weather conditions.

## **Run Two Stations at Once**

Boost the efficiency of your irrigation schedule with powerful and convenient functionality.

## **Manage Your Way with the Centralus™ Platform**

It's easy to enable Centralus control with Wi-Fi, Ethernet, or cellular connection options in new or retrofit applications.



## **ROAM Remote Compatibility**

For convenient system maintenance and service from a distance while on-site, use a Hunter ROAM or ROAM XL Remote.

## **Wireless Valve Link (WVL) Compatibility**

Install the Wireless Valve Output Module to operate WVL-equipped valves wirelessly.

## **Two-Wire Compatibility**

Install the EZ-DM Output Module to enable control for up to 54 stations with Hunter's revolutionary EZ Decoder System.

Learn more about the **ICC2 Controller** and the **Centralus Platform**.



[hunter.info/ICC2EM](https://hunter.info/ICC2EM)



[hunter.info/CentralusEM](https://hunter.info/CentralusEM)

The popular and cost-effective **ICC2 Controller** is web-enabled to provide a range of convenient remote irrigation management capabilities for professionals.

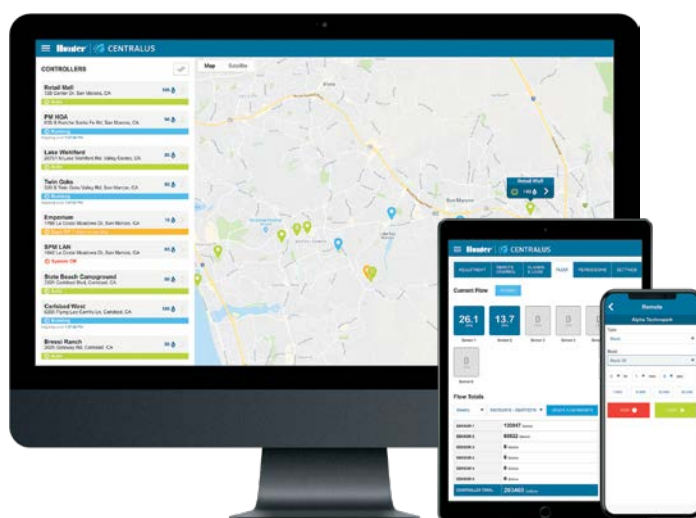


### Mobile-Friendly

The Centralus Irrigation Management Platform provides comprehensive, cloud-based control and monitoring features for the ICC2 Controller. It allows you to access a controller's status, change settings, view forecasts, save water, and receive instant notification of important system alarms — all without costly and time-consuming travel and site visits.

### Secure and Reliable

Centralus Software is reviewed by industry-leading independent security analysts to ensure that protection and privacy standards are stringently maintained, including hardware authentication.



WIFIKIT



LANKIT



CELLKIT

### Three Flexible Connection Options

To upgrade to next-generation Centralus control, choose one of three connection options depending on site requirements and personal preference: Wi-Fi (WIFIKIT), hardwired Ethernet (LANKIT), or 4G LTE cellular (CELLKIT).

#### Wi-Fi Connection

2.4 GHz Wi-Fi router compatible, 802.11 b/g/n, 20 MHz

#### Ethernet (LAN) Connection

Secure, high-speed Ethernet connection with RJ-45 connection to network

#### Cellular Connection

4G LTE cellular communication module; monthly service plan required

## Key Benefits

- Number of stations:
  - Conventional: 8 to 38 (plastic), 8 to 54 (metal and pedestals)
  - With two-wire EZ Decoder System or Wireless Valve Link System: up to 54 (all enclosure options)
- 4 independent irrigation programs (8 start times each)
- Any two programs can operate simultaneously, providing more efficient watering
- 2 sensor inputs for dedicated flow sensor and weather sensor connections
- Built-in flow monitoring for smart water savings
- 1 P/MV output for pump start relay and master valve activation
- Backward compatibility to original ICC Controllers allows for seamless updates to older systems
- Upgradable to Centralus Software for web-based central control options

## Operating Specifications

- Transformer input: 120/230 VAC
- Transformer output (24 VAC): 1.4 A
- Station output (24 VAC): 0.56 A
- P/MV output (24 VAC): 0.56 A
- Approvals: Wall Mounts IP55 (outdoor), Plastic Pedestal IP24, UL, cUL, FCC, CE, RCM, ISED
- Warranty period: 5 years

## User-Installed Options

- WIFIKIT, LANKIT, or CELLKIT communications for cloud-based Centralus control
- Compatible with the Hunter Wireless Valve Link System
- Compatible with the Hunter Flow-Sync® Sensor for standalone flow monitoring connections
- Compatible with the Hunter Solar Sync ET Sensor



Recognised as a Smart Drop Certified Controller when used with a Solar Sync Sensor.



### Plastic

Height: 30.5 cm  
Width: 35 cm  
Depth: 12.7 cm

### Metal

(grey or stainless steel)  
Height: 40.6 cm  
Width: 33 cm  
Depth: 12.7 cm



### Metal Pedestal

(grey or stainless steel)  
Height: 91.4 cm  
Width: 29.2 cm  
Depth: 12.7 cm



### Plastic Pedestal

Height: 99 cm  
Width: 61 cm  
Depth: 43 cm

## ICC2 FLOW-CAPABLE CONTROLLERS

| Model       | Description                                                   |
|-------------|---------------------------------------------------------------|
| I2CF-800-PL | 8-station base model, plastic outdoor wall mount              |
| I2CF-800-M  | 8-station base model, grey metal outdoor wall mount           |
| I2CF-800-SS | 8-station base model, stainless steel wall mount              |
| I2CF-800-PP | 8-station base model, plastic pedestal                        |
| ICC-FPUP2   | ICC2 Retrofit Kit for original ICC Controllers                |
| ICC-PED     | Grey pedestal for metal controller mount                      |
| ICC-PED-SS  | Stainless steel pedestal for stainless steel controller mount |
| ICC-PWB     | Optional pedestal wiring board for metal pedestals            |

## ICC2 SERIES STATION EXPANSION

| Model                   | Description                                    |
|-------------------------|------------------------------------------------|
| ICM-400                 | 4-station plug-in module                       |
| ICM-800                 | 8-station plug-in module                       |
| ICM-2200                | 22-station expansion module (1 per controller) |
| EZDS                    | EZ-DM EZ Decoder Output Module                 |
| Two-wire output options | EZ-1 Single-station EZ Decoder                 |
|                         | EZ-LR Long-range, single-station EZ Decoder    |

## WIRELESS VALVE LINK OPTIONS

| Model  | Description                                       |
|--------|---------------------------------------------------|
| WVOM-E | Wireless Valve Output Module                      |
| WVL-E  | Wireless Valve Link (1-, 2-, and 4-station sizes) |
| RPT-E  | Wireless Signal Repeater (1 per controller)       |

**Website** [hunterirrigation.com](http://hunterirrigation.com) | **Customer Support** +1-760-752-6037

Helping our customers succeed is what drives us. While our passion for innovation and engineering is built into everything we do, it is our commitment to exceptional support that we hope will keep you in the Hunter family of customers for years to come.